



Technology for Life Science

Kowa Applanation Tonometer

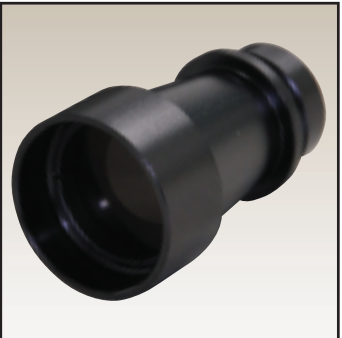
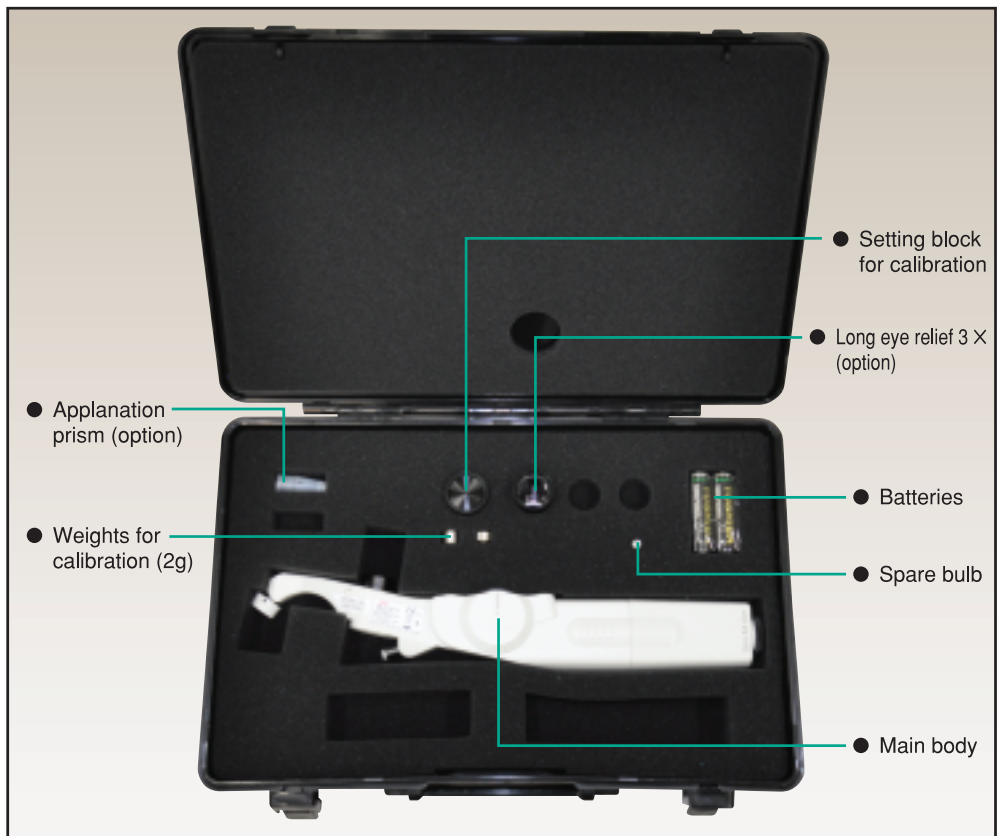
HA-2



Convenient Item For Daily Clinical Practice



● Standard set of HA-2



Long eye relief 3 X (option)

● Main Features

- ◆ Compact, lightweight and well-balanced; easy to handle with one hand.
- ◆ Unique one-spring mechanism assures correct reading regardless of patient posture.
- ◆ Built-in illumination permits you to use the instrument regardless of the lighting conditions of consultation room.
- ◆ Direct reading type precision dial requires no conversion table to change the readings.
- ◆ Accessories such as adjustable head rest and interchangeable eyepiece provide most suitable conditions for measurement.

● Specifications

Type	Hand-held applanation tonometer
Applanation prism	Doubling prism interchangeable (option)
Scale range	0~60 mm Hg (1 mm Hg division)
Illumination	Interlocked with thumb wheel Lens bulb 2.5 V, 0.25 A interchangeable 1.5 V, 2 pcs Interchangeable
a) ON/OFF	
b) Bulb	
c) Battery used	
Eyepiece	6 X Movable 290 mm 240g/0.5lbs
Magnification	
Head rest	
Length	
Weight	

* All specifications and external design are subject to modification of change without prior notice.



Distribution name : Kowa Applanation Tonometer HA-2

Kowa Kowa Company, Ltd.

World Sales Headquarters
 4-14, Nihonbashi-honcho 3-chome, Chuo-ku, Tokyo 103-8433 Japan
 Phone: 81(3)3279-7639 Facsimile: 81(3)3279-7541
 URL: <http://www.kowa.co.jp/e-life/>

Kowa Company, Ltd. Chofu Factory **Kowa Europe GmbH**
 3-1, Chofugaoka 3-chome, Chofu, Tokyo 182-0021, Japan
 Immermannstr. 43B, 40210 Düsseldorf, Germany
 Tel: +49 (0) 211-179354-18
 Fax: +49 (0) 211-161952
 Email: medical@kowaeurope.de
 Web site: www.kowamedical.com



ATO6_1097200MA/K
Printed in Japan.

